

# CAYMAS

NAPLES



## THE AZURE SERIES

FROM 2,400 TO OVER 3,700 SQUARE FEET ON 62' LOTS

TRANSITIONAL



BIRCHWOOD III ELEVATION G

THE AZURE SERIES

BRITISH WEST INDIES



BIRCHWOOD III ELEVATION A



BIRCHWOOD III ELEVATION D

MODERN



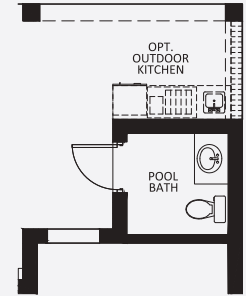
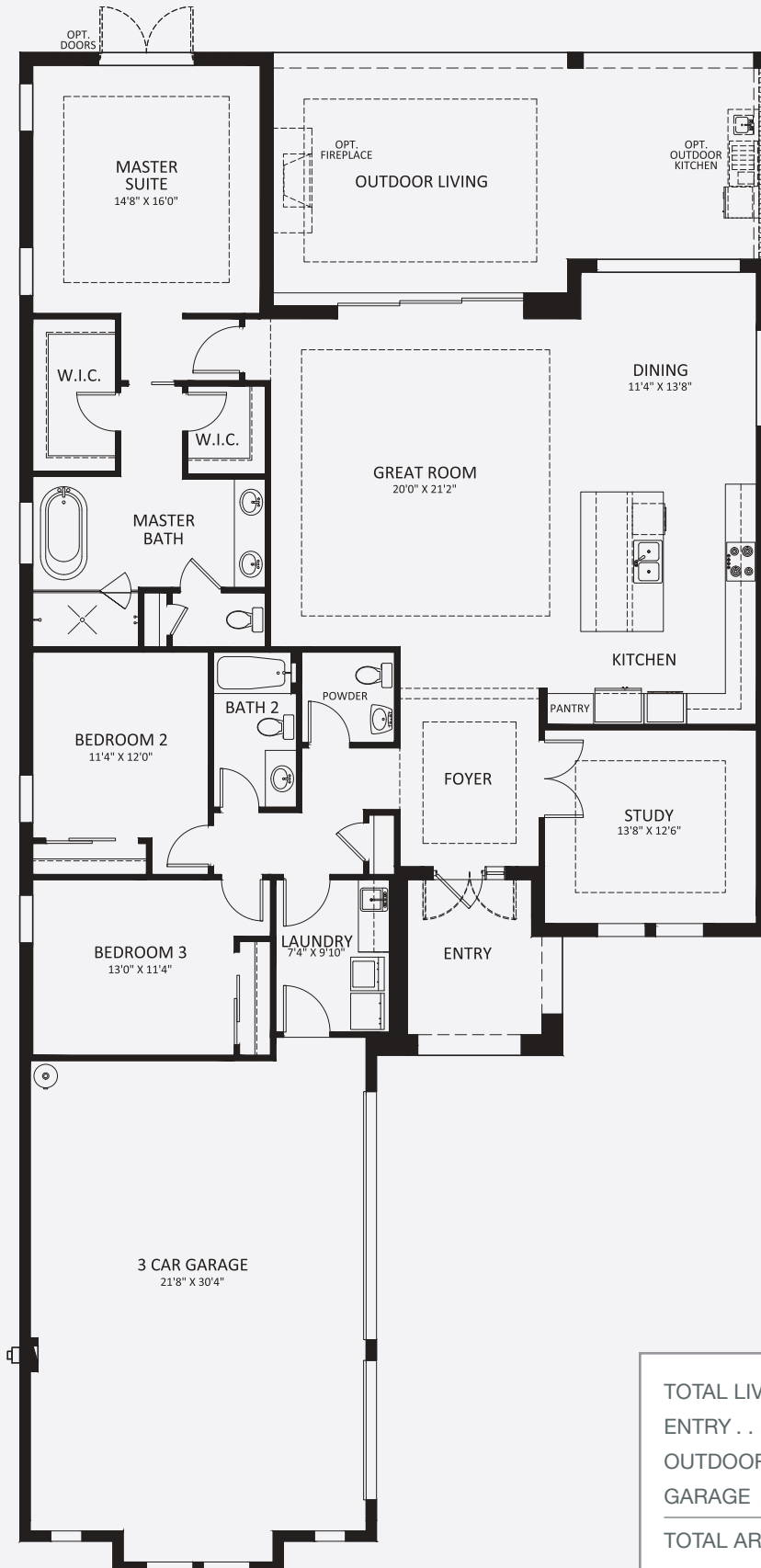
BIRCHWOOD III ELEVATION K



BIRCHWOOD III ELEVATION L

# BIRCHWOOD III

THREE BEDROOM, TWO AND 1/2 BATH, GREAT ROOM,  
DINING ROOM, STUDY, OUTDOOR LIVING, 3-CAR GARAGE



**OPT. POOL BATH**  
 ADDS 50 SQ. FT. LIVING A/C  
 I.L.O. OUTDOOR LIVING



**OPT. SHOWER**  
 I.L.O. TUB

TOTAL LIVING AREA . . . . .	2,431 sq. ft.
ENTRY . . . . .	107 sq. ft.
OUTDOOR LIVING . . . . .	484 sq. ft.
GARAGE . . . . .	745 sq. ft.
<b>TOTAL AREA . . . . .</b>	<b>3,767 sq. ft.</b>

TRANSITIONAL



CAMBRIA IV ELEVATION J

THE AZURE SERIES

BRITISH WEST INDIES



CAMBRIA IV ELEVATION A



CAMBRIA IV ELEVATION D

MODERN



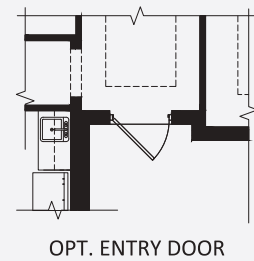
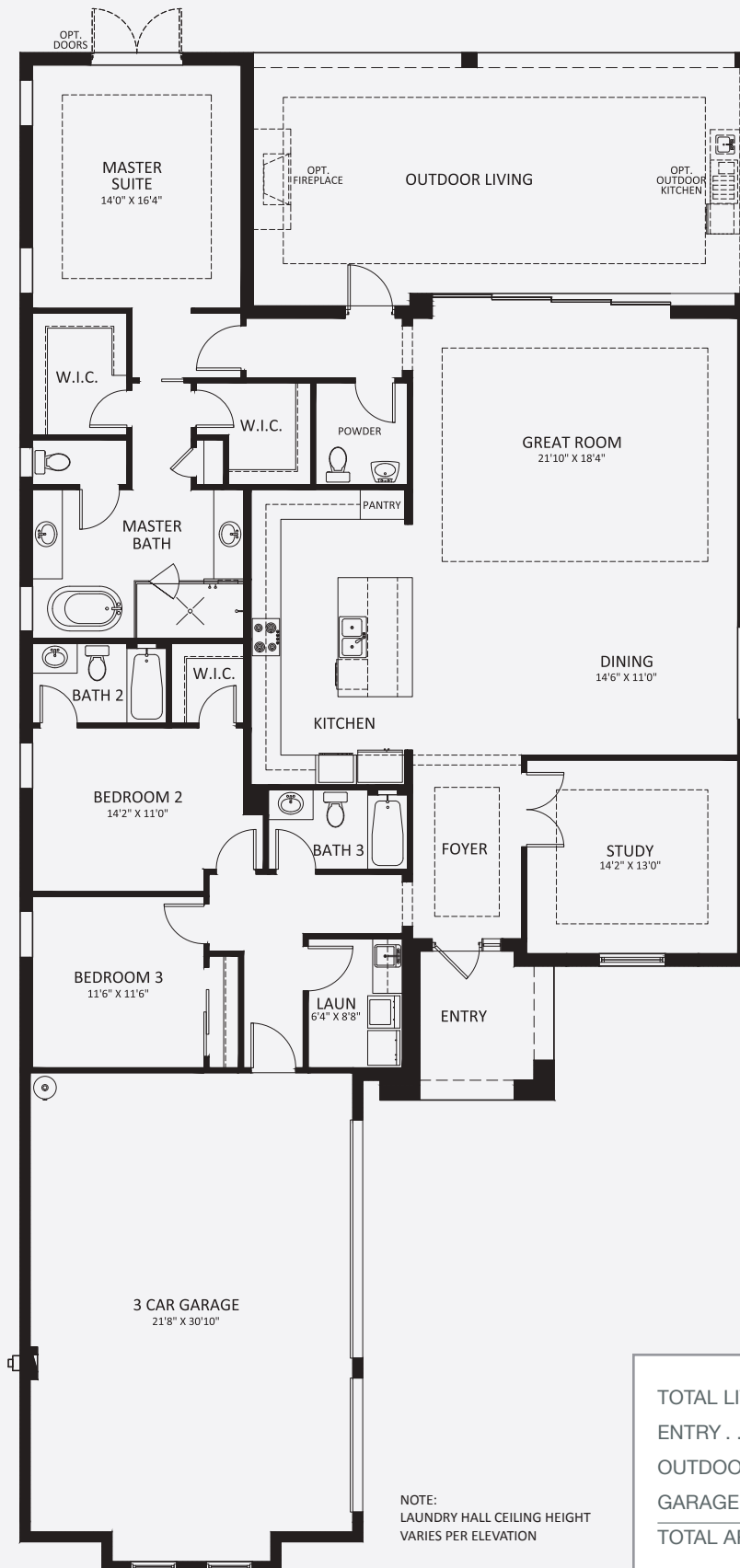
CAMBRIA IV ELEVATION K



CAMBRIA IV ELEVATION L

# CAMBRIA IV

THREE BEDROOM, THREE AND 1/2 BATH, GREAT ROOM,  
DINING ROOM, STUDY, OUTDOOR LIVING, 3-CAR GARAGE



TOTAL LIVING AREA . . . . .	2,627 sq. ft.
ENTRY . . . . .	.91 sq. ft.
OUTDOOR LIVING . . . . .	.567 sq. ft.
GARAGE . . . . .	.748 sq. ft.
<b>TOTAL AREA . . . . .</b>	<b>4,033 sq. ft.</b>

NOTE:  
LAUNDRY HALL CEILING HEIGHT  
VARIES PER ELEVATION

TRANSITIONAL



EASTON III ELEVATION G

THE AZURE SERIES

BRITISH WEST INDIES



EASTON III ELEVATION A



EASTON III ELEVATION D

MODERN



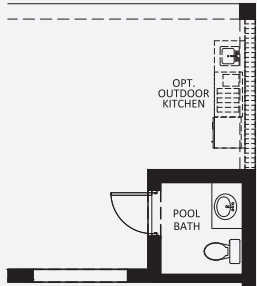
EASTON III ELEVATION K



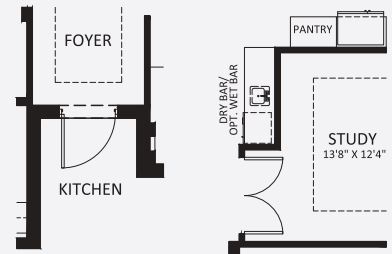
EASTON III ELEVATION L

# EASTON III

FOUR BEDROOM, THREE AND 1/2 BATH, GREAT ROOM, DINING ROOM, DINING ROOM, STUDY (OPT. FIFTH BEDROOM), OUTDOOR LIVING, 3-CAR GARAGE



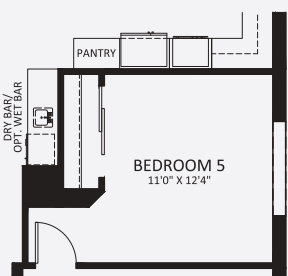
OPT. POOL BATH  
ADDS 46 SQ. FT. LIVING A/C  
I.L.O. OUTDOOR LIVING



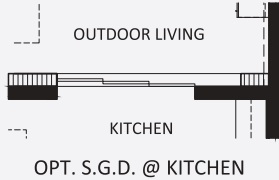
OPT. 42" ENTRY DOOR      OPT. BAR



OPT. BEDROOM 5  
I.L.O. STUDY



OPT. BEDROOM 5  
I.L.O. STUDY W/ OPT. BAR



OPT. S.G.D. @ KITCHEN



TOTAL LIVING AREA .....	2,818 sq. ft.
ENTRY .....	.63 sq. ft.
OUTDOOR LIVING .....	.584 sq. ft.
GARAGE .....	.682 sq. ft.
<b>TOTAL AREA .....</b>	<b>4,147 sq. ft.</b>

TRANSITIONAL



MAYFIELD III ELEVATION J

THE AZURE SERIES

BRITISH WEST INDIES



MAYFIELD III ELEVATION A



MAYFIELD III ELEVATION D

MODERN



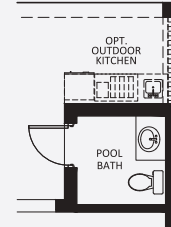
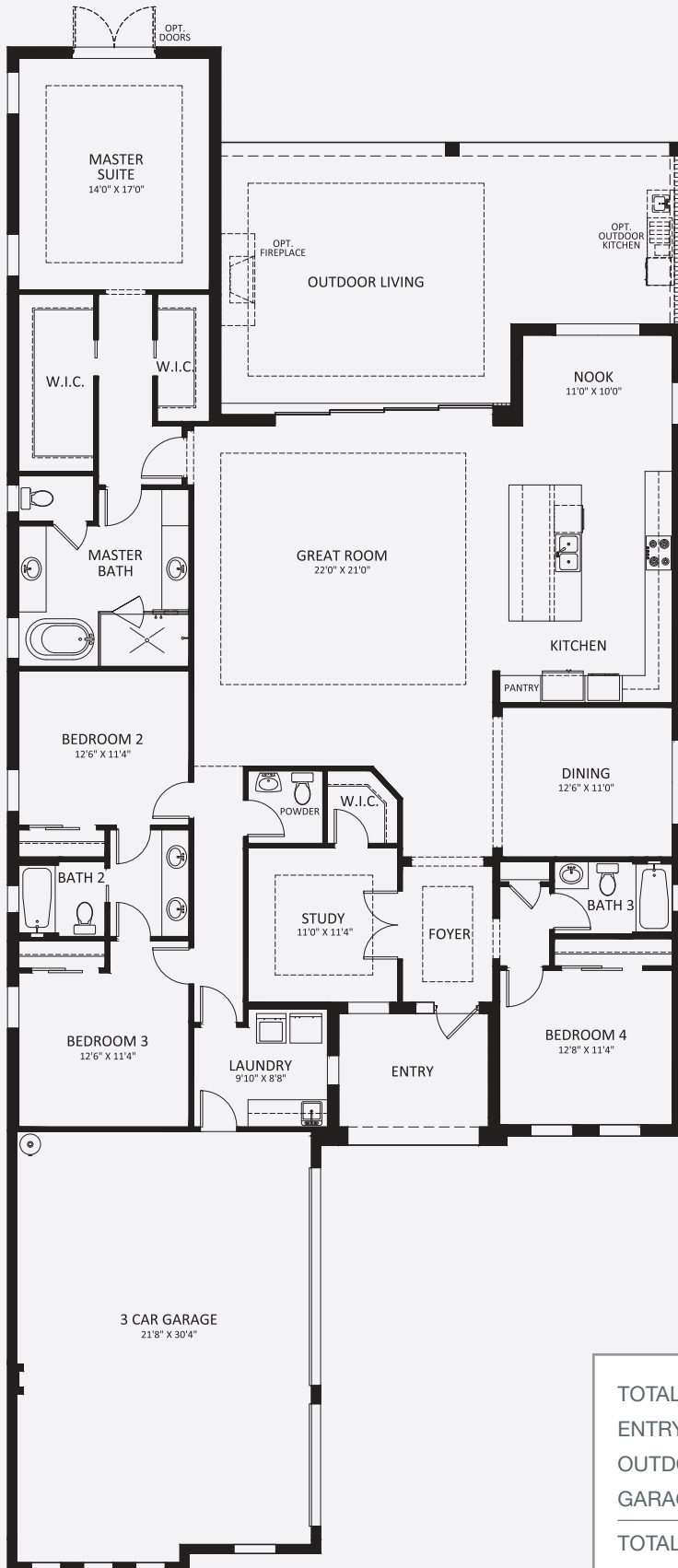
MAYFIELD III ELEVATION K



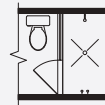
MAYFIELD III ELEVATION L

# MAYFIELD III

FOUR BEDROOM, THREE AND 1/2 BATH, GREAT ROOM,  
DINING ROOM, STUDY, OUTDOOR LIVING, 3-CAR GARAGE



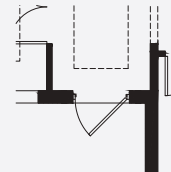
**OPT. POOL BATH**  
ADDS 50 SQ. FT. LIVING A/C  
I.L.O. OUTDOOR LIVING



**OPT. SHOWER**  
I.L.O. TUB



**OPT. BAR**



**OPT. 42" ENTRY DOOR**

TOTAL LIVING AREA . . . . .	3,033 sq. ft.
ENTRY . . . . .	109 sq. ft.
OUTDOOR LIVING . . . . .	596 sq. ft.
GARAGE . . . . .	731 sq. ft.
<b>TOTAL AREA . . . . .</b>	<b>4,469 sq. ft.</b>

TRANSITIONAL



BRITISH WEST INDIES

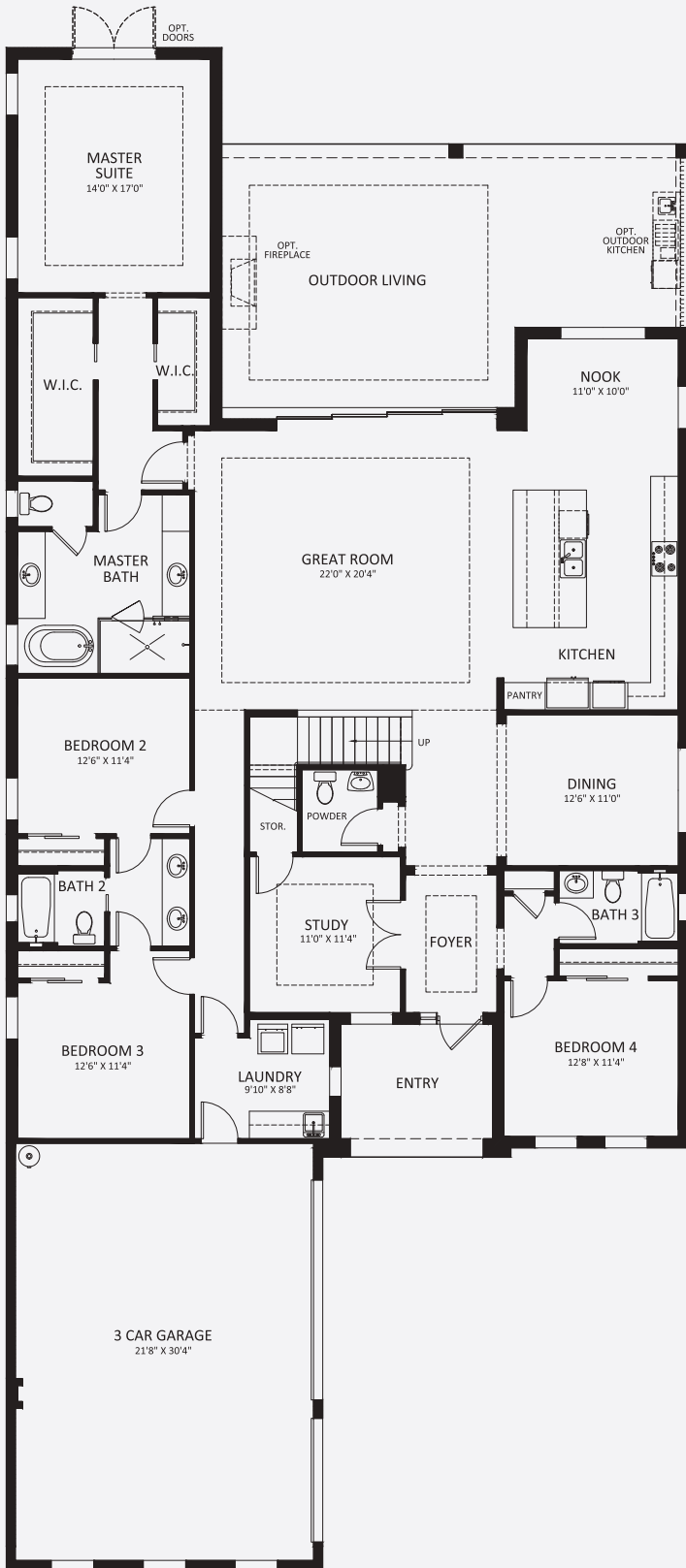


MODERN

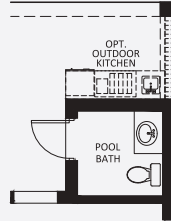


# MAYFIELD GRANDE III

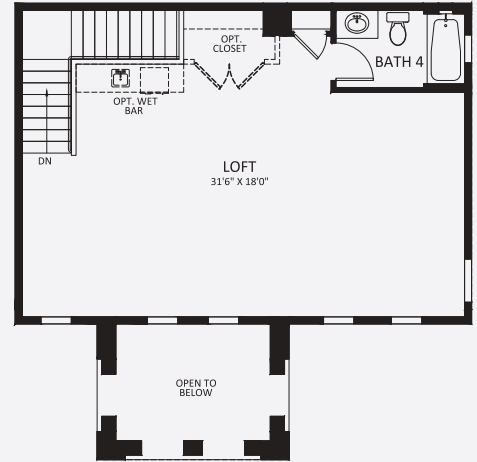
FOUR BEDROOM, FOUR AND 1/2 BATH, GREAT ROOM, DINING ROOM, STUDY, LOFT, OPTIONAL FIFTH BEDROOM, OUTDOOR LIVING, 3-CAR GARAGE



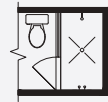
1st FLOOR



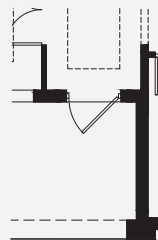
OPT. POOL BATH  
ADDS 50 SQ. FT. LIVING A/C  
I.L.O. OUTDOOR LIVING



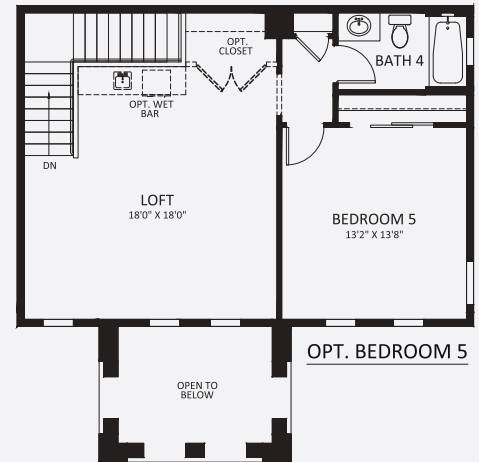
OPEN TO BELOW



OPT. SHOWER  
I.L.O. TUB



OPT. 42"  
ENTRY DOOR



2nd FLOOR

1ST FLOOR LIVING AREA . . . . .	3,033 sq. ft.
2ND FLOOR LIVING AREA . . . . .	669 sq. ft.
TOTAL LIVING AREA . . . . .	3,702 sq. ft.
ENTRY . . . . .	109 sq. ft.
OUTDOOR LIVING . . . . .	596 sq. ft.
GARAGE . . . . .	713 sq. ft.
TOTAL AREA . . . . .	5,120 sq. ft.



**25** A FOUNDATION  
OF EXCELLENCE  
*years*

With distinctive architectural styles, luxurious interiors and extensive options, Stock Luxury Homes' portfolio of residences are inspiring both inside and out. These exceptional residences feature masterful finishes, distinctive interiors and spectacular outdoor living spaces—all the elegant appointments luxury homeowners crave.

As the most respected name in luxury homes in Southwest Florida, Stock Luxury Homes caters to exceptionally sophisticated homebuyers who understand quality and aspire to the extraordinary lifestyle that STOCK has refined and mastered. These are homes of enduring design that bear the signature of a homebuilder with a legacy of excellence.

Now celebrating 25 years as Southwest Florida's preeminent luxury homebuilder, STOCK has completed more than 6,500 homes in the area's most highly regarded communities, and won more than 500 awards for excellence in construction.

# CAYMAS

NAPLES

239.249.6265 | [caymasnaples.com](http://caymasnaples.com)

9385 Caymas Terrace, Naples, FL 34114



ORAL REPRESENTATIONS CANNOT BE RELIED UPON AS CORRECTLY STATING THE REPRESENTATIONS OF THE DEVELOPER. FOR CORRECT REPRESENTATIONS REFERENCE SHOULD BE MADE TO THE DOCUMENTS REQUIRED BY SECTION 718.503, FLORIDA STATUTES, TO BE FURNISHED BY A DEVELOPER TO A BUYER OR LESSEE. ALL RENDERINGS AND PLANS ARE PROPOSED CONCEPTS SHOWN ONLY FOR MARKETING PURPOSES AND ARE BASED ON THE DEVELOPER'S CURRENT PRELIMINARY DEVELOPMENT PLAN. DEVELOPER RESERVES THE RIGHT TO MODIFY, REVISE OR WITHDRAW THE PROPOSED DEVELOPMENT PLAN IN DEVELOPER'S SOLE DISCRETION WITHOUT NOTICE. NOTHING HEREIN OR IN ANY OTHER COMMUNICATION SHALL BE DEEMED TO OBLIGATE THE DEVELOPER, OR ANY AFFILIATE OF DEVELOPER, TO CONSTRUCT THE PROJECT OR OFFER ANY OF THE PROJECT FOR SALE, AND NOTHING HEREIN SHALL BE DEEMED A GUARANTY OF ANY KIND. THIS IS NOT AN OFFER TO SALE OR SOLICITATION OF OFFERS TO BUY.